

481cm

397cm

- 4.65

RH: H 420
h 275

538cm

- 516

RH: H 450
h 280

331cm

974cm

432cm

262cm

+24

+48

RH: H 450
h 280

+72

+96

378cm

- 516

+120

Theaterkeller

Masstab	Format	Einheit	gez	Datum
1:50	A4	cm	mk	Aug-22



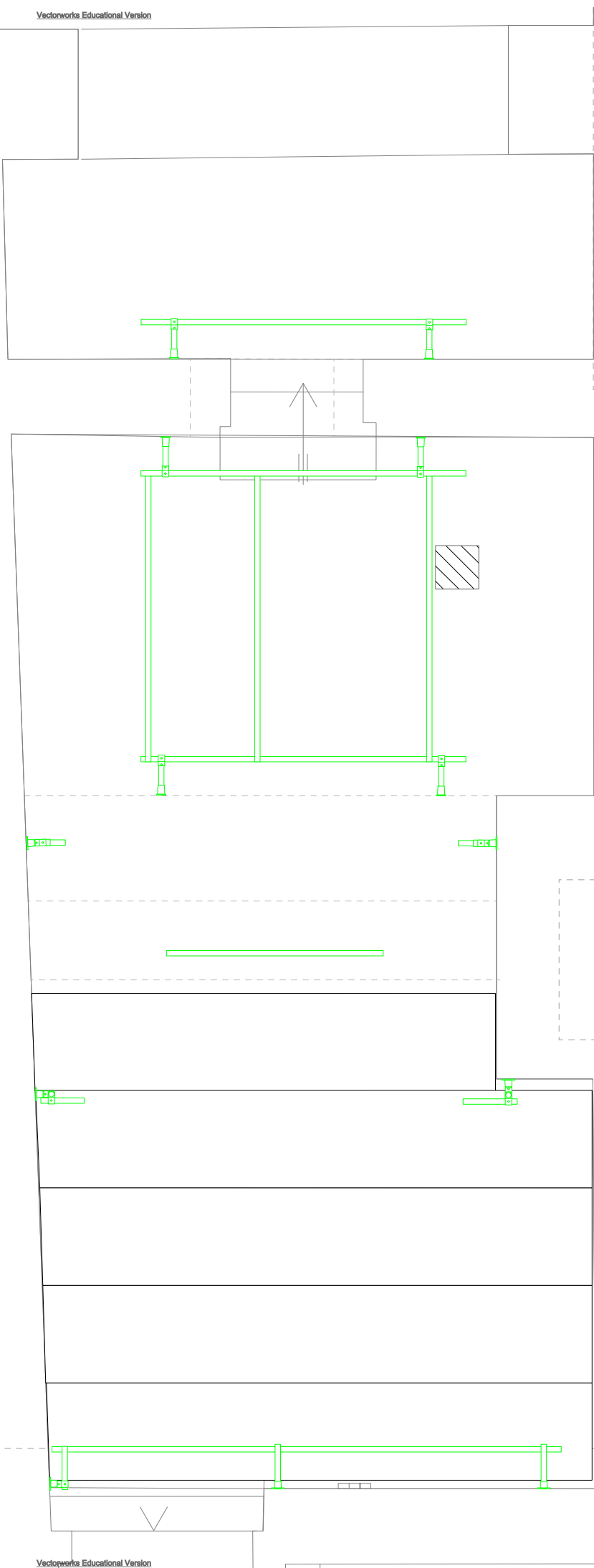
Rathausgasse 20/22 3011 Bern
 +41 (0)31 311 97 17
 technik@schlachthaus.ch
 www.schlachthaus.ch

0.1 m

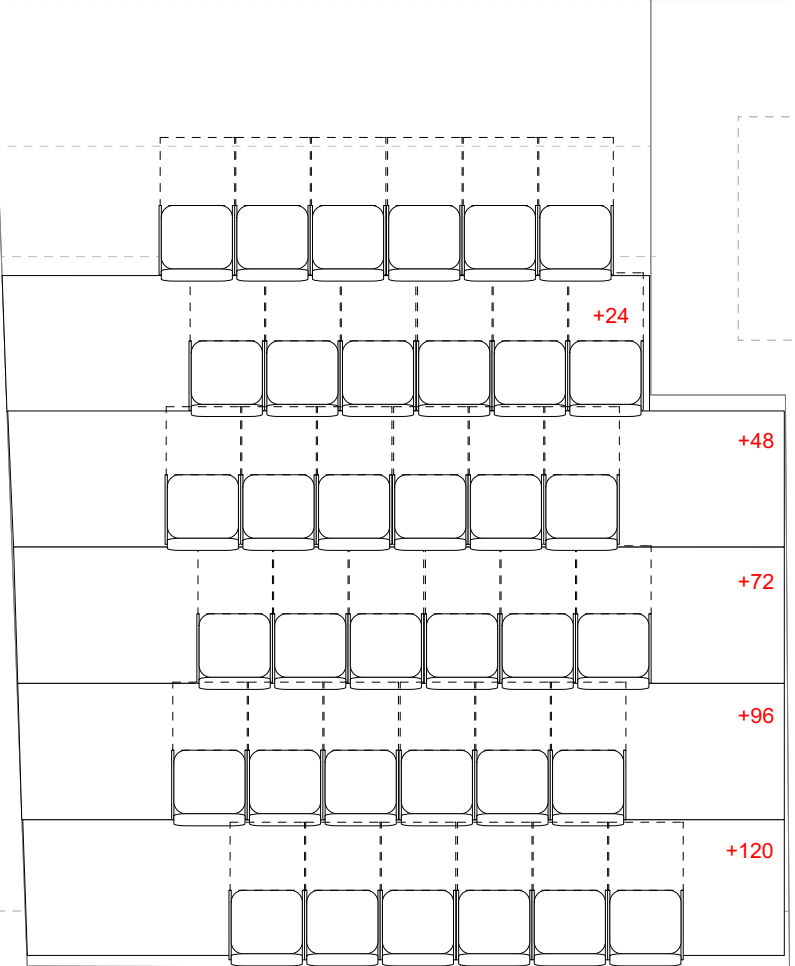
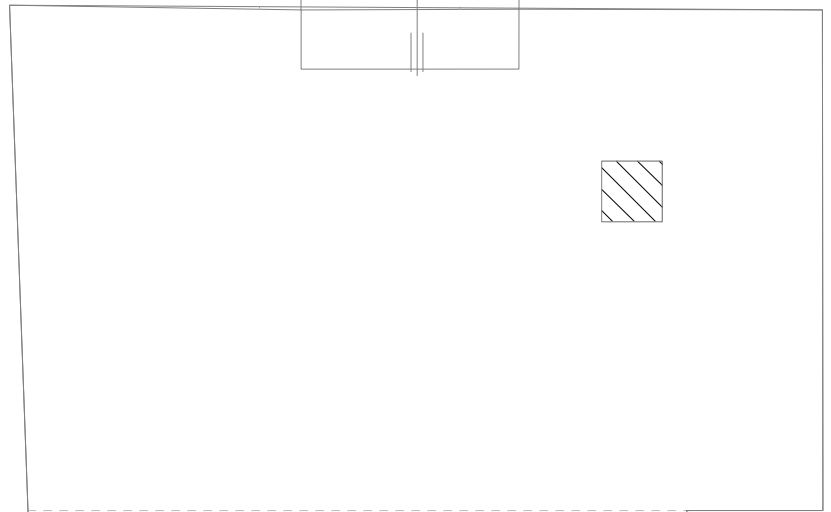
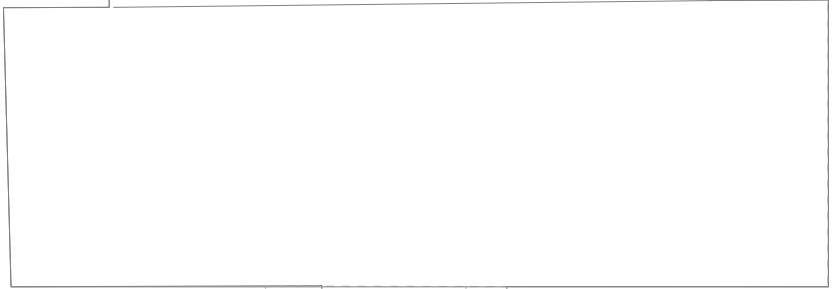
Masstab 1:50

5 m

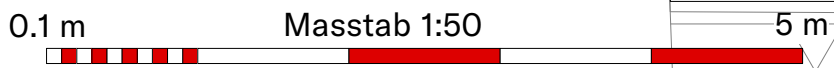
504cm

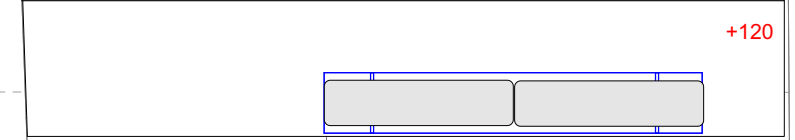
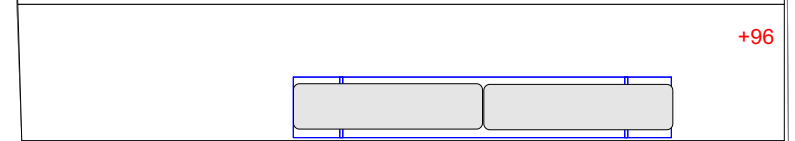
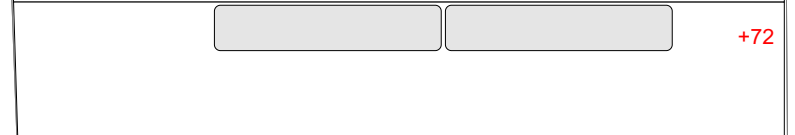
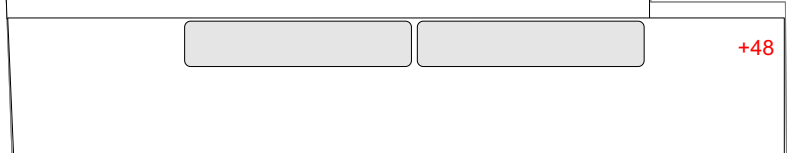
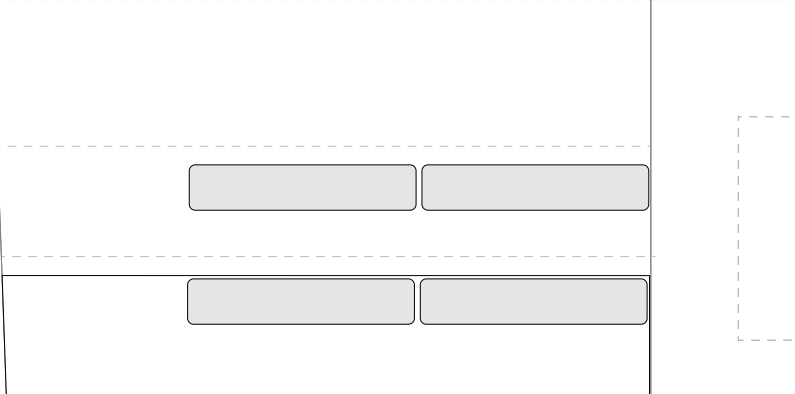
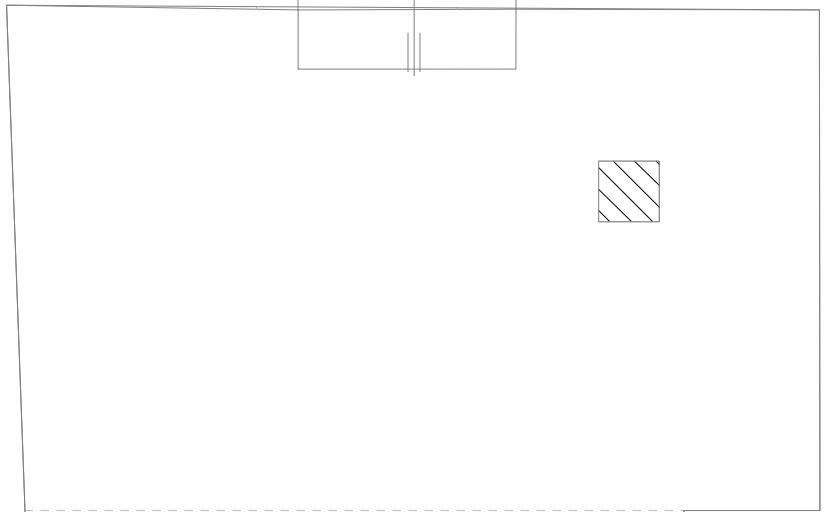
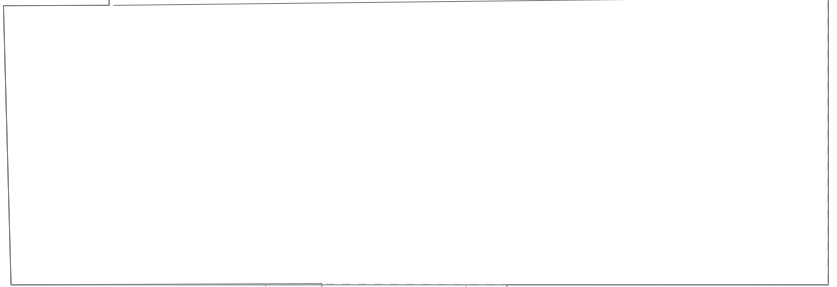


Theaterkeller				
Masstab	Format	Einheit	gez	Datum
1:50	A4	cm	mk	Aug-22
		Rathausgasse 20/22 3011 Bern +41 (0)31 311 97 17 technik@schlachthaus.ch www.schlachthaus.ch		



Theaterkeller				
Masstab	Format	Einheit	gez	Datum
1:50	A4	cm	mk	Aug-22
		Rathausgasse 20/22 3011 Bern +41 (0)31 311 97 17 technik@schlachthaus.ch www.schlachthaus.ch		





Theaterkeller				
Masstab	Format	Einheit	gez	Datum
1:50	A4	cm	mk	Aug-22
		Rathausgasse 20/22 3011 Bern +41 (0)31 311 97 17 technik@schlachthaus.ch www.schlachthaus.ch		

